

# CHIEF BOARD - HD

## PRODUCT SHEET



### PRODUCT DESCRIPTION

Chief Board HD provides heavy duty impact protection for any construction site. The boards are lightweight, while offering extreme protection from heavy foot traffic, machinery and dropping objects.

Suitable for use on both internal and external projects. Available with fabric backing for additional substrate protection.

### FEATURES & BENEFITS

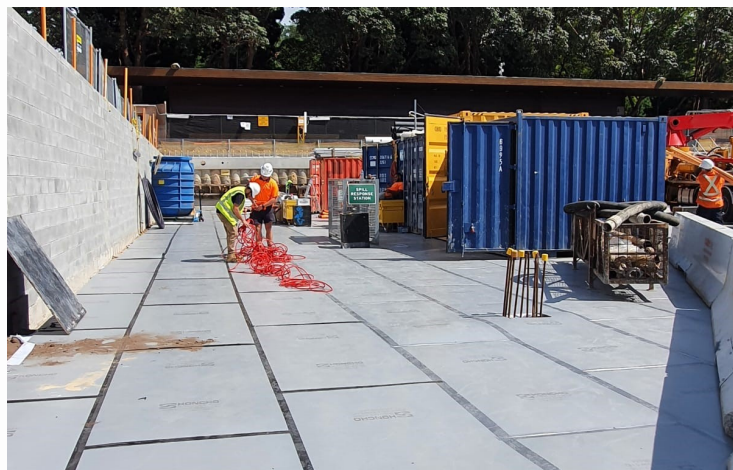
- Extreme Impact Protection
- Suitable for use Under Heavy Machinery eg. Scissor/Forklifts and Mobile Cranes
- Reusable
- Lightweight
- Flame Retardant
- Resistant to Water Intrusion
- Non-Leaching (Staining)
- Slip-Rated
- Alternate option to Plywood & Masonite
- Fabric Underlay provides Extra Protection for Sensitive Substrates

### USES & LIMITATIONS

- Cured Concrete\*
- Porcelain & Ceramic Tile
- Epoxy Flooring
- Hardwood Floors\*
- Most Stone Tiles\*
- Sheet Vinyl & Laminate
- Vertical Surfaces
- Over Waterproof membranes
- Not to be used as a Structural Board
- Ideal for use on the following projects: Health & Education, Data Centres, High-End Residential, Hospitality, Sports & Recreation Sectors and more

### SPECIFICATIONS

- Board Size: 110 x 220 x 0.5cm
- Square Meterage 2.42sqm/board
- Colour: Light Grey (Grey Fabric)
- Board Weight: 3.75kg - 1500 gsm
- **Product Code: HCBHD15**



Water Resistant



Non - Leaching



Slip Rated



Impact Protection



Flame Retardant



Under Machinery

Disclaimer: \*Speak with your Honcho representative to confirm substrate suitability. Customers are advised to consider the information in this data sheet in the context of how the product will be used, including surfaces and any other products used. The information provided in this guide represents our best scientific and practical knowledge. Any advice, information or assistance provided by Honcho Supplies in relation to its products is given in good faith, however is provided without liability or responsibility. Due to the wide variety of site conditions we are unable to assume liability for any loss that may arise from the use of our products. The user is responsible for checking the suitability of products for their intended use.



# CHIEF BOARD - HD

## INSTALLATION GUIDE



### INSTALLATION STEPS

1. Lay out boards in a brick-style format
2. Boards to be laid firmly against each other
3. Apply Gorilla Tape to the seams to keep boards in place. Please refer to images on the right.

For external use, make sure to leave a 1-2mm gap between each board to allow for any expansion due to heat.



### CUTTING THE BOARDS

1. Use a sharp stanley knife, drop saw or angle grinder
2. For installation on stairs on corners, score, snap and fold the boards



### TAPING/SECURING THE BOARDS

We recommend using Gorilla Tape to secure the Chief Boards together. Gorilla Tape is available for purchase through Honcho Supplies.

We also recommend sufficiently weighing down the boards when used externally to minimise risk of displacement due to wind and extreme weather events



Disclaimer: Customers are advised to consider the information in this data sheet in the context of how the product will be used, including surfaces and any other products used. The information provided in this guide represents our best scientific and practical knowledge. Any advice, information or assistance provided by Honcho Supplies in relation to its products is given in good faith, however is provided without liability or responsibility. Due to the wide variety of site conditions we are unable to assume liability for any loss that may arise from the use of our products. The user is responsible for checking the suitability of products for their intended use.